

## Prediction of PID control model on PLC

Erwani Merry Sartika<sup>\*1</sup>, T. Rudi Sarjono<sup>2</sup>, Diki Dwi Saputra<sup>3</sup>

Universitas Kristen Maranatha (Electrical Engineering Department),  
Suria Sumantri St. No.65, 022-2012186, Indonesia.

\*Corresponding author, e-mail: erwanimerry@gmail.com<sup>1</sup>, rudi.sarjono@gmail.com<sup>2</sup>,  
knight.diki@gmail.com<sup>3</sup>

### Abstract

*PID (Proportional Integral Derivative) is a control algorithm that mostly used in industry. However, users have never known what the PID model that used inside the PLC. By knowing the PID model that used in PLC, users will have more choice in determining the more appropriate tuning algorithm. Also, users can use MATLAB to perform analysis and can implement it to PLC. Through OPC Server (Object Linking and Embedding for Process Control Server) as a software interface, programs on a windows operating system can communicate with industry devices universally. PID model prediction method is done by comparing the output of the plant controlled by PID model in PLC and PID model in SIMULINK MATLAB using OPC Server intermediaries. Based on comparison result in graph and analysis using integral error method, PLC M221 using Parallel PID model and PLC S7-1200 using Ideal PID model.*

**Keywords:** MATLAB, PID control, PLC, prediction

**Copyright © 2019 Universitas Ahmad Dahlan. All rights reserved.**

### 1. Introduction

PID (Proportional Integral Derivative) is a control algorithm that mostly used in industry because of its good performance and relatively easy to tune its parameters [1, 2]. There are three forms of PID models in general, namely series, parallel, and ideal. PLC (Programmable logic controller) is a control device that is often used in the industry because it is relatively easy to program, durable and can be integrated with other industrial devices [3, 4]. PID in industry is implemented using PLC hardware [5-7]. Each PLC brand uses a different PID model [8]. The differences PID model making each output between different brands PLC not the same although using the same plant. In practice, the user never knows the PID model used on the PLC. By knowing the PID model used, the user will have more choice in determining the more appropriate tuning algorithm. Also, by knowing PID model in PLC, user can use MATLAB to analyze and implement the analysis results to PLC.

PLC can be integrated with MATLAB application that works on windows operating system [9-12]. MATLAB (Matrix Laboratory) is a program used to perform engineering and mathematical computations as well as modeling and simulating the SIMULINK environment [13-15]. The advantages of integrating PLC and MATLAB directly are reducing complexity, minimizing manually entering data, simplifying system maintenance, facilitating plant modeling/simulation processes, no need to install additional hardware on the PC, and cost savings. In the absence of additional hardware then there is no need to change the I/O analog to digital or vice versa, since all I/O is in digital form. This paper will explain prediction of the PID model used in PLC with virtual plant in MATLAB.

Some researcher that uses MATLAB analysis results to be used or compared to the results in the PLC. Comparative results with MATLAB and PLC provide findings on various performance parameters in the application of shell and tube type heat exchanger control systems [16, 17]. Comparison of MPC controls using OPC and MATLAB servers as OPC clients and PID control on PLC on the implementation of heating water tank systems [18-20]. In the design of multivariable process control, a tool has been created to convert the Simulink model to automatically generated code in C/C++ and implementation directly on the PLC [15], [21]. The conventional SCADA can enhanced further more with PLC as well as NI-OPC server significantly through the experimental validation procedure of a simple cascade control system through a number of architectures (PLC, SCADA, OPC, internet) [9]. Through realization in PLC

can used to prove that improvement performance of traditional PID obtained from parameters self-tuning PID [22-25]. The system is design in MATLAB/Simulink and the software communicates with PLC using Kepware OPC which allows communication between multi-vendor devices without any restrictions [26].

## 2. PID Control

PID Control is a control loop feedback mechanism that mostly used in industrial control systems. PID control calculates an error value and applies correction based on proportional, integral, and derivative terms. There are 3 types of PID controllers; they are series PID, parallel PID, and ideal PID as shown in (1), (2), and (3). The parameters of each type of PID controller have an influence on the control signal generated.

$$PID_{series} = K_p \left( 1 + \frac{1}{T_i s} \right) (1 + T_d s) \quad (1)$$

$$PID_{parallel} = K_p + \frac{K_i}{s} + K_d s \quad (2)$$

$$PID_{ideal} = K_p \left( 1 + \frac{1}{T_i s} + T_d s \right) \quad (3)$$

The series PID model is usually called the interacting form, because the value of derivative time affects the integral part, so this part interacts with each other. The Ziegler-Nichols PID rules tuning were developed for this controller algorithm. The parallel PID model is one that is commonly used because it has a proportional value, pure integral action. In the Ideal PID model, proportional, integral, and derivative actions do not interact with each other in the time domain. The Cohen-Coon and Lambda PID tuning rules were designed for this algorithm [27].

## 3. Research Method

PLC is a controller in which there is a PID controller. Each PLC from various vendors provides PID controllers with different models. In this paper will be compared PID model of two different PLC brand with intermediary OPC Server and MATLAB. PLC will be used as PID controller. PID model testing process on PLC will be done by comparing the output of virtual plant after PID controlled on PLC and output after PID controlled on MATLAB, with the help of OPC Server. MATLAB SIMULINK is used to create a virtual plant from second order system and as a comparison of the PID model. After all the testing that had been done, user will have more choice in determining more appropriate tuning algorithm. Also, by knowing PID model in PLC, user can use MATLAB to analyze and implement the analysis results to PLC.

The OPC Server application used is KepserverEx v6. For the communication configuration diagram between PLC, OPC Server, and MATLAB used in the comparison simulation process shown in Figure 1. For configuration of PID controller on PLC and MATLAB with OPC Server interface device used in this paper is shown in Figure 2. While the configuration for PID in MATLAB is shown in Figure 3.

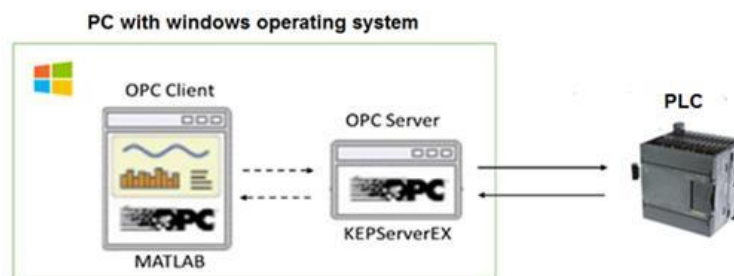


Figure 1. Communication configuration diagram between PLC, OPC Server, and MATLAB

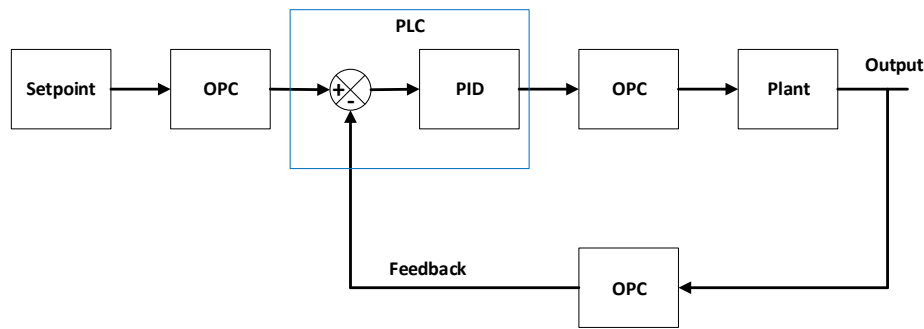


Figure 2. PID configuration block diagram of PLC with OPC Server interface (PLC to MATLAB)

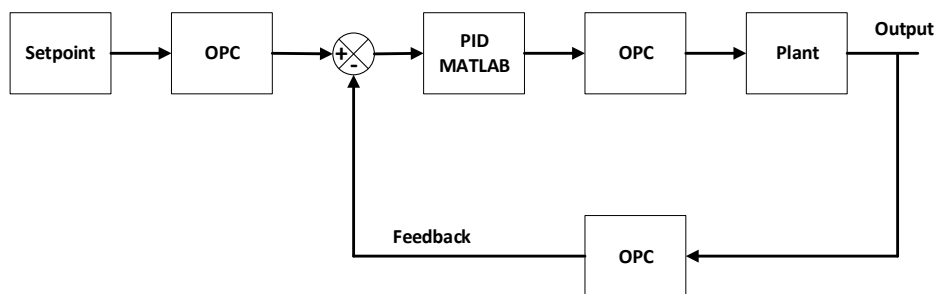


Figure 3. PID MATLAB configuration block diagram with OPC Server interface (MATLAB to MATLAB)

The two block diagrams shown in Figure 2 and Figure 3, are made similar, because for the process of comparison between the two systems must have the same state. The process is the setpoint goes into the OPC, the PID output goes to the OPC, and the outputs (feedback) go to OPC. Plant made in the form of a virtual plant. In this paper virtual plant created in SIMULINK application. The second order plant used plant mass-spring-damper.

**4. Results and Analysis**

This section shows the simulation results in the output graph from the virtual plant after being controlled by PLC PID and MATLAB PID. For comparison use parallel PID MATLAB and ideal PID MATLAB to compare result with PLC PID to know PID model used in PLC. For PLC M221 from Schneider produces a comparison of output graph as shown in Figure 4 using PID parameters in Table 1. The first PID parameters are obtained by using auto-tune in PLC M221.

Next use the second PID parameter to ensure the simulation results in PLC M221. The second PID parameter is shown in Table 2 and the results are shown in Figure 5. For PLC S7-1200 from Siemens produces a graph of output graph as shown in Figure 6, with PID parameter as in Table 3 obtained by using auto-tune PLC S7-1200. Next result with second PID parameter on PLC S7-1200. The second PID parameter is shown in Table 4 and the results are shown in Figure 7.

Table 1. The First PID Parameters used for Comparison of Mass-spring-Damper Plant for M221 PLC

Indicator	Value
Setpoint	100
Ts	50ms
PID Parameter	Kp: 130
	Ti : 16
	Td: 4

Table 2. The second PID Parameters used for Comparison of Mass-spring-damper Plant for M221 PLC.

Indicator	Value
Setpoint	100
Ts	50ms
PID Parameter	Kp: 189
	Ti : 27
	Td: 1

Table 3. The First PID Parameters used for Comparison of Mass-spring-damper Plant for PLC S7-1200

Indicator	Value
Setpoint	100
Ts	50ms
PID Parameter	Kp: 0.1
	1/ki: 0.4
	Kd: 0.05

Table 4. The second PID Parameters used for Comparison of Mass-spring-damper Plant PLC S7-1200

Indicator	Value
Setpoint	100
Ts	50ms
PID Parameter	Kp: 1.89
	/ki: 0.758
	<d: 0.308

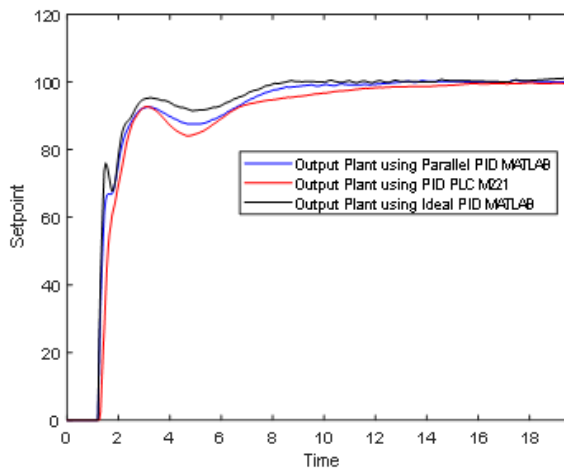


Figure 4. Comparison of output of M221 and MATLAB for mass-spring-damper plant with first PID parameter

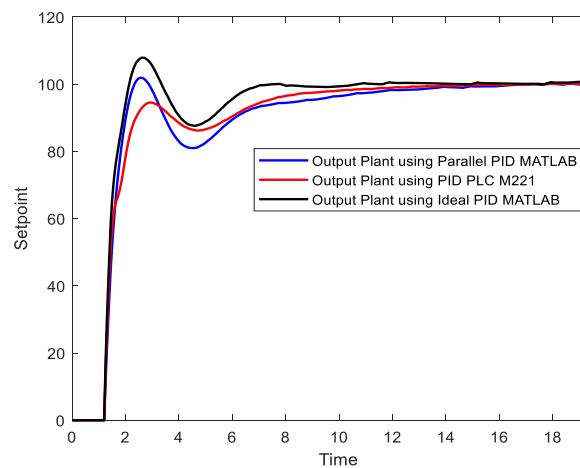


Figure 5. Comparison of output of M221 and MATLAB for mass-spring-damper plant with second PID parameter

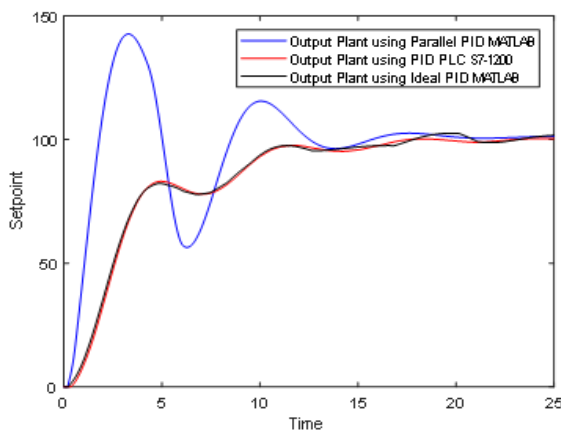


Figure 6. Comparison of output S7-1200 and MATLAB for mass-spring-damper plant with the first PID parameter.

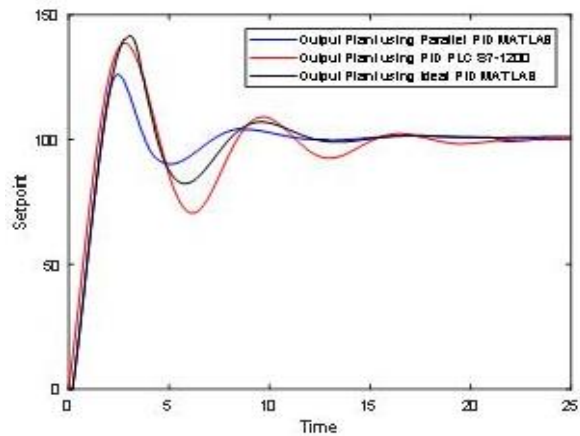


Figure 7. Comparison of output S7-1200 and MATLAB for mass-spring-damper plant with second PID parameter

For data analysis, the integral error method is used to indicate the total error difference between the output plant of PID PLC and output plant of PID MATLAB (parallel PID model and ideal PID model). The results are shown in Table 5. From the results of data analysis using integral error method, it is concluded that PLC M221 uses parallel PID model and PLC S7-1200 using Ideal PID model. It is because the total integral error difference when PID PLC M221 compare to parallel PID MATLAB is smaller than the total integral error difference when PID

PLC M221 compare to ideal PID MATLAB. As well as the total integral error difference when PID PLC S7-1200 compare to ideal PID MATLAB is smaller than the total integral error difference when PID PLC S7-1200 compare to parallel PID MATLAB.

Table 5. The Results of Data Analysis using Integral Error Method (mass-spring-damper plant)

Total integral error difference	PID PLC M221 compare to parallel PID MATLAB	PID PLC M221 compare to ideal PID MATLAB	PID PLC S7-1200 compare to parallel PID MATLAB	PID PLC S7-1200 compare to ideal PID MATLAB
First PID parameter (auto-tune)	808.30232	1391.07528	2619.8851	341.7901
Second PID parameter	632.74384	1870.73432	1910.2448	1287.3413

To further convince the conclusion of PID control method prediction on PLC then tested at real plant. The real plant used in the simulation is the third order RLC plant. The RLC circuit is realized in the PCB as shown in Figure 8. The equation of the transfer function of the real plant is as show in (4)

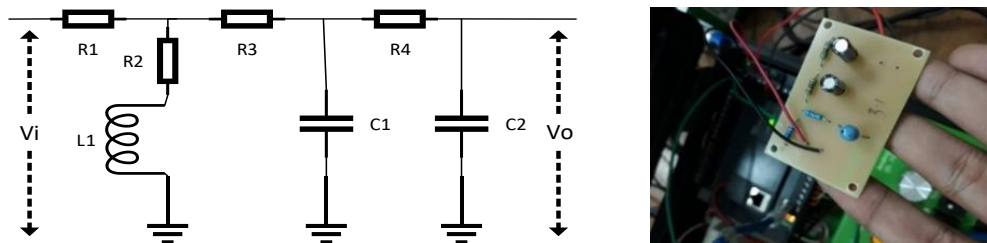


Figure 8. Realization of 3<sup>rd</sup> order RLC circuit on PCB

$$\frac{Vo(s)}{Vi(s)} = \frac{sL + R2}{s^3[(LC1C2R4)(R1 + R3)] + s^2[C1C2(R1R2R4 + R1R3R4 + R2R3R4) + L(C1 + C2)(R1 + R3) + LC2R4] + s[(C1 + C2)(R1R2 + R1R3 + R2R3) + C2R1R4 + C2R2R4 + L] + (R1 + R2)} \tag{4}$$

with R1 = R2 = 56kΩ, R3 = R4 = 100kΩ, C1 = 100μF, C2 = 10μF, and L1 = 5mH then the transfer function is shown in Equation (5)

$$\frac{Vo(s)}{Vi(s)} = \frac{0.005s + 56000}{0.0033s^3 + 4.256 \times 10^4s^2 + 4.794 \times 10^5s + 112000} \tag{5}$$

For simulation results using PLC M221 with real plant results output comparison graph as show in Figure 9 with parameter of PID used as show in Table 6. The result of integral error method between PLC M221 and parallel PID is 274.178 whereas with ideal PID is 292.736.

These results are increasingly assured that the PID model on the PLC S7-1200 use the parallel PID model. As for the simulation results using PLC S7-1200 with real plant results the output comparison graph as in Figure 10 with parameter PID used as in Table 7.

Table 6. PID Parameters used for Comparison of Real Plant for M221 PLC

Indicator	Value
Setpoint	3000
Ts	50ms
PID Parameter	Kp: 1.26
	Ti: 1.8
	Td: 0.1

Table 7. PID Parameter used for comparison of real plant for PLC S7-1200

Indicator	Value
Setpoint	100
Ts	50ms
Parameter PID	Kp: 0.1
	1/ki: 0.4
	Kd: 0.05

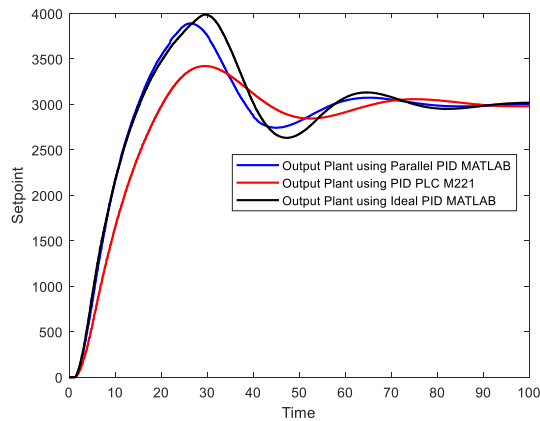


Figure 9. Comparison of output of M221 and MATLAB for real plant with PID parameter

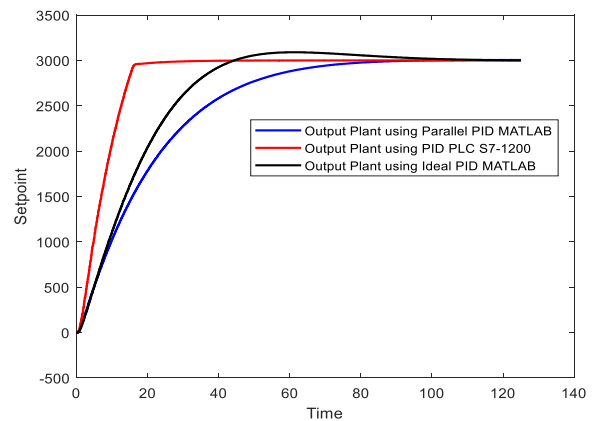


Figure 10. Comparison of output S7-1200 and MATLAB for real plant with PID parameter

The result of integral error method between PLC S7-1200 with parallel PID is 519.638 whereas with ideal PID is 407.065. These results are increasingly assured that the PID model on the PLC S7-1200 use the ideal PID model. For the results of the whole analysis is shown in Table 8.

Table 8. The Result of Data Analysis using Integral Error Method (Real Plant)

Total integral error difference	PID PLC M221 compare to parallel PID MATLAB	PID PLC M221 compare to ideal PID MATLAB	PID PLC S7-1200 compare to parallel PID MATLAB	PID PLC S7-1200 compare to ideal PID MATLAB
Real Plant	274.178	292.736	519.638	407.065

#### 4. Conclusion

PID model predictions method have been successfully used by comparing the output of the plant controlled by PID model in PLC and PID model in SIMULINK MATLAB using OPC Server intermediaries. Based on comparison result in graph and analysis using integral error method, PLC M221 is predicted using Parallel PID model and PLC S7-1200 using Ideal PID model. By knowing the PID model used, user will have more choice in determining the more appropriate tuning algorithm. By knowing PID model in PLC, user can use MATLAB/Simulink to analyze and implement the analysis results to PLC.

#### References

- [1] R. E. Samin, L. M. Jie, and M. A. Zawawi, "PID implementation of heating tank in mini automation plant using programmable logic controller (PLC)," In ECCE 2011 - Int. Conf. Electr. Control Comput. Eng. 2011: 515–519.
- [2] M. Nafea, A. R. Mohammad Ali, J. Baliah, M. S. Mohamed Ali. "Metamodel-Based Optimization of a PID Controller Parameters for a Coupled-Tank System". *TELKOMNIKA Telecommunication Computer Electronics and Control*. 2018; 16(4): 1590–1596.
- [3] J. Li, Y. Yao, C. Tong. *A Water Flow Control Method of Quenching Cooling System Based on Smith Predictor*. IEEE Symposium on Electrical & Electronics Engineering (EEESYM). 2012: 459–462.
- [4] L. Zhan, J. Zhao. *Implement of increment-model PID control of PLC in constant-pressure water system*. 2007 8<sup>th</sup> Int. Conf. Electron. Meas. Instruments, ICEMI, 2007: 4336–4339.
- [5] Y. Chen, J. Lei, X. Yang. *Variable Discourse of Universe Fuzzy-PID Temperature Control System for Vacuum Smelting Based on PLC*. 2009 WRI Glob. Congr. Intell. Syst. 2009: 541–544.
- [6] S. Tong, Y. Li, J. Ren, Y. Zhang. *PID control of air tank temperature system with parameters tuning through network*. Int. Conf. Adv. Mechatron. Syst. ICAMechS. 2015 October: 233–237.

- [7] W. Kolaj, J. Mozaryn, M. Syfert. *PLC-PIDTuner: Application for PID tuning with SIMATIC S7 PLC controllers*. 2016 21<sup>st</sup> Int. Conf. Methods Model. Autom. Robot. MMAR 2016. 2016: 306–311.
- [8] Y. Li, C. Tang, K. Liu, *PID parameter self-setting method base on S7-1200 PLC*. 2011 Int. Conf. Electr. Control Eng. ICECE 2011 – Proc. 2011: 274–277.
- [9] Y. Z. Maulana, S. Hadisupadmo, E. Leksono. *Performance analysis of PID controller, fuzzy and ANFIS in pasteurization process*. Proc. 2016 Int. Conf. Instrumentation, Control. Autom. ICA 2016. 207: 171–177.
- [10] H. Li, L. Yang. *The Application of Fuzzy Control in PLC Temperature Control System Based on OPC Technology*. Proc. - 2014 7th Int. Symp. Comput. Intell. Des. Isc. 2014. 2015; (2): 288–291.
- [11] A. G. Gajjar. *Real Time Implementation of MPC in Bottle Washer Machine for Small Scale Beverage Industry*. 6<sup>th</sup> International Conference on Computer Applications in Electrical Engineering-Recent Advances (CERA). 2017: 509–514.
- [12] S. Hadisupadmo, E. Leksono. *Model Predictive Control Design and Performance Analysis of a Pasteurization Process Plant*. International Conference on Instrumentation, Control and Automation (ICA). 2016: 81–87.
- [13] D. Popa, M. Nicolae, P. Nicolae, M. Popescu. *Design and Simulation of a 10 MW Photovoltaic Power Plant using MATLAB and Simulink*. IEEE International Power Electronics and Motion Control Conference (PEMC). 2016.
- [14] W. Cao, Q. Meng. *Based on PLC temperature PID - Fuzzy control system design and simulation*. ICINA 2010 - 2010 Int. Conf. Information, Netw. Autom. Proc. 2010; (2): 417–421.
- [15] R. Hyl, R. Wagnerova. *Fast Development of Controllers with Simulink Code*. 2017 18<sup>th</sup> Int. Carpathian Control Conf. 2017: 406–411.
- [16] T. V. Bhaskarwar, S. S. Giri, R. G. Jamakar. *Automation of shell and tube type heat exchanger with PLC and LabVIEW*. 2015 Int. Conf. Ind. Instrum. Control. ICIC 2015. 2015: 841–845.
- [17] M. R. Anwar, O. Anwar, S. F. Shamim, A. A. Zahid. *Human Machine Interface Using OPC (OLE for Process Control)*. IEEE Eng. Sci. Technol. Student Conf. Proc. 2004: 35–40.
- [18] A. G. Gajjar, A. I. Patel, R. G. Singh. *Design and development of bottle washer machine for small scale beverage industry*. Conf. Proceeding - 2015 Int. Conf. Adv. Comput. Eng. Appl. ICACEA 2015. 2015; (10): 325–331.
- [19] P. L. C. Based, Z. Lieping, Z. Aiqun, and Z. Yunsheng. *On Remote Real-time Communication between MATLAB and PLC Based on OPC Technology*. In Proceedings of the 26th Chinese Control Conference. Zhangjiajie, Hunan, China. July 26-31 2007.
- [20] K. J. Åström, T. Hägglund. *Revisiting the Ziegler-Nichols step response method for PID control*. *Jurnal Process Control*. 2004; 14(6): 635–650.
- [21] D. Kajzr, M. Diblik, L. Beran, L. Hubka. *The Possibilities for Design and Implementation of Multivariable Control for a Level Control in a Double Tank Process*. 17th International Carpathian Control Conference (ICCC). 2016: 297–302.
- [22] A. Lakshmi Sangeetha, B. Naveenkumar, A. Balaji Ganesh, N. Bharathi. *Experimental validation of PID based cascade control system through SCADA-PLC-OPC and internet architectures*. *Jurnal Int. Meas. Confed*. 2012; 45(4): 643–649
- [23] H. Liu. *Algorithm of fuzzy PID parameters self tuning and its realization in PLC system*. Proc. - Int. Conf. Comput. Asp. Soc. Network. CASoN'10. 2010; (1): 561–564.
- [24] M. Manyari-Rivera, J. C. Basilio. *Integrated online auto-tuning and digital implementation of PID controllers in industrial processes*. IEEE Int. Conf. Control Autom. ICCA. 2011: 50–555.
- [25] L. Mora, R. Lugo, C. Moreno, J. E. Amaya. *Parameters optimization of PID controllers using metaheuristics with physical implementation*. Proc. - Int. Conf. Chil. Comput. Sci. Soc. SCCC. 2017.
- [26] S. Nayak, S. Agashe, A. B. Level, A. Boiler. *Three Element Drum Level Control using MATLAB/ Simulink and OPC*. 2017 2nd International Conference for Convergence in Technology (I2CT). 2017: 607–609.
- [27] C.-C. Yu. *Autotuning of PID Controllers A Relay Feedback Approach*. Springer London. 2006.